



Phoenix FS1610K/FS1610E Series

Firechief

The Phoenix Firechief sets new standards for protection against burglary attack and Fire in an economic, convenient and attractive format. Ideal for the secure storage of company records, historical documents or exam papers

- **Security Protection** - Tested to the prestigious European S1 Security standard (EN14450 ECB.S Certified)** giving cash cover of £2,000 or Valuables cover of £20,000*
- **Fire Protection** - Recommended for 30 minutes fire protection for paper records.
- **Locking** - Fitted with a high security double bitting VDS class 1 keylock (FS1610K series) or high security VDS class 1 (SECU SELO-A) electronic lock with time delay function (FS1610E series).
- **Locking Options** - High Security user friendly Fingerprint lock capable of holding 100 users.**
- **Door Construction** - High security 3 way espagnolette boltwork provides great strength and attack resistance.
- **Colour** - Finished in a high quality scratch resistant paint RAL9003 White.
- **Storage** - Ideal for large storage of documents, records & exam papers.

Optional Extras Available
Height adjustable shelves
Suspended filing cradles
R3 Electronic Lock & Key Lock
Cut Key (only available at time of order)
Fingerprint Lock & Key Lock
Data Protection Insert



FS1611K



FS1613K/E



FS1612E



FS1610K



FS1610E



OPTIONAL



OPTIONAL



*Ratings are approximate only and may vary due to area conditions and location. Please check with your underwriter.

**S1 Security Standard is no longer valid when fingerprint lock only is fitted.

YOU OWE IT TO YOUR COMPANY

When fire strikes, it's not just the premises it destroys, it will also engulf all the essential company paperwork stored inside them.

Unfortunately, the failure to preserve these vital records, only too often, destroys the company itself! In spite of the computer revolution, vast amounts of important data and records are still held on paper.

With an increase in fire hazards from electrical equipment, insurance statistics indicate that as many as 35% of companies will cease to exist within the first year after a major fire. It is therefore essential for survival that all your records are protected. From debtor records to payroll and pension fund data, from customer orders to product designs, all valuable and legal documents, deeds and contracts require protection. Don't forget by law you are required to protect hazardous chemicals and paints from theft and fire.

The answer to all of these problems is the Phoenix Firechief FS1610 Series.

FIRE RESISTANT SECURITY CUPBOARDS

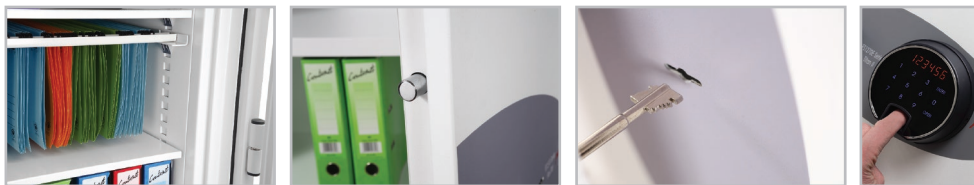
The combination of state of the art insulation materials and innovative design has led to the development of the Phoenix Firechief FS1610 Series.

Available in three sizes, our cupboards are robustly constructed with a 50mm fire gap between the inner and outer layers. This gap is filled with our specially developed system of multi-layered insulation materials to ensure the survival of your documentation.

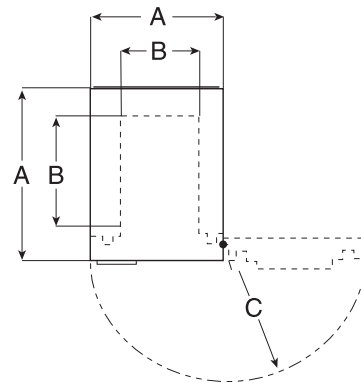
All models are equipped with height adjustable shelves with optional lateral rails available.

File Capacity Chart

Type of document file	Total number of files per unit	Configuration	Total number of files per unit	Configuration	Total number of files per unit	Configuration
Series: FS1600	Model: FS1611		Model: FS1612		Model: FS1613	
A4 Lever Arch Folder (H320 x W75 x D290mm)	21	3 rows of 7 files	52	4 rows of 11 files 8 files on sides on top shelf	68	4 rows of 14 files 12 on sides on top shelf
Foolscap Lever Arch Folder (H350 x W80 x D285 mm)	15	2 rows of 6 files 3 files on sides on top shelf	44	4 rows of 10 files 4 files on sides on top shelf	58	4 rows of 13 files 6 files on side on top shelf
Foolscap Box File (H370 x W75 x D245mm)	17	2 rows of 7 files 3 files on sides on top shelf	46	4 rows of 11 files 2 files on sides on top shelf	58	4 rows of 14 files 2 on sides on top shelf



DEALER'S STAMP



● Dimensions stated as:

- A External height x width x depth
- B Internal height x width x depth
- C Door swing / Door Handle Depth
- D Weight
- E Capacity
- F No of shelves
- G Packaged Dimensions & Weight

● Firechief FS1611K/FS1611E

- A 1240mm x 670mm x 525mm
- B 1045mm x 545mm x 412mm
- C 690mm/50mm
- D 109 kg
- E 235 litres
- F 3
- G 1260mm x 700mm x 600mm / 111kg

● Firechief FS1612K/FS1612E

- A 1885mm x 930mm x 525mm
- B 1685mm x 835mm x 412mm
- C 415mm/50mm
- D 193 kgs
- E 580 litres
- F 4
- G 1890mm x 970mm x 605mm / 195kg

● Firechief FS1613K/FS1613E

- A 1885 x 1200 x 525mm
- B 1685 x 1100 x 412mm
- C 550mm/50mm
- D 230 kgs
- E 764 litres
- F 4
- G 1890mm x 1230mm x 605mm / 238kg

● Data Protection Insert – FSDPI03

- A 301mm x 518mm x 357mm
- B 170mm x 366mm x 230mm
- D 20 kgs

All weights and sizes are approximate.

All Phoenix Fire Safes come with a Free lifetime 'after the fire' replacement warranty and a full two year materials and labour warranty.

Phoenix policy is one of constant improvement. We therefore reserve the right to alter any part of the specification achieved in this publication without incurring any obligation.



FS1610 / 01 15 GB

Certificate Number 1059
ISO 9001