



# Phoenix DS2500K/DS2500E Series

## Data Combi

FOUR SAFES IN ONE – this safe provides fire protection for paper documents, computer diskettes, tapes and all forms of data storage and security for cash and valuables all in one unit. Suitable for use in residential or business premises.

- **Fire Protection (Paper)** – Tested to Swedish NT Fire 017 – 90 Paper (DS2501/DS2502), NT Fire 017 – 120 Paper (DS2503), providing up to 120 minutes fire protection for paper documents.
- **Fire Protection (Data)** – Tested to Swedish NT Fire 017 – 90dis (DS2501/DS2502), NT Fire 017 – 120 data (DS2503), providing up to 120 minutes Fire protection for computer diskettes, tapes and all forms of data storage.
- **Fire Protection (Digital Media)** – Tested to MTC – DIP120 – 60DM fire test standard, providing 60 minutes fire protection for digital media, DVD's, USB's and memory sticks.
- **Security Protection** – The safe is recommended for an overnight cash risk of £2,500.00 or £25,000.00 valuables\*.
- **Drop Test** – Fire and impact tested from 9.1 metres for resistance to the impact of falling through the burning floors of a building.
- **Locking** – Fitted with a high quality keylock supplied with two keys (DS2500K) or R3 high security and user friendly electronic lock with clear LED display. To further enhance security the lock also features internal alarm, dual control, hidden code and scrambled code (DS2500E series).
- **Fittings** – Each safe comes complete with height adjustable shelf and lockable drawer.
- **Fixing** – Can be secured to the floor by choosing optional PAD4 base fixing system.
- **Special Features** – Fitted with automatic slam shut locking. DS2501K/E and DS2502K/E are supplied with four internal key hooks and the DS2503K/E has five.



DS2502K

Data Section

DS2503K/E

DS2501E



DS2500K

DS2500E

DS2500E

OPTIONAL

DATA SECTION ONLY

\*Ratings are approximate only and may vary due to area conditions and location. Please check with your underwriter.

The Phoenix DS2500K/E Data Combi series are manufactured from the best quality EGI steel plate and, when combined with the latest fire resistant technology, a safe of massive strength, security and innovation is produced.

Great attention was given in the design of the safe to create not only resistance to attack by force or fire, but also to simplicity and ease of use.

The door is secured using a high quality keylock supplied with two keys (DS2500K) or R3 high security and user friendly electronic lock with clear LED display. To further enhance security the lock also features internal alarm, dual control, hidden code and scrambled code (DS2500E series).

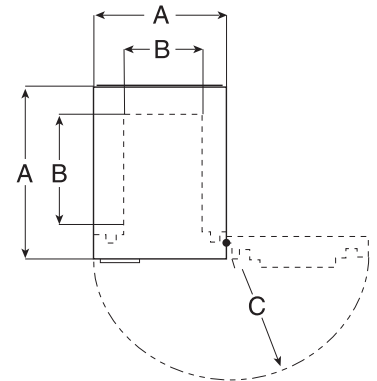
Whenever an emergency arises, simply close the door and the PAL automatic locking facility takes over.

Sliding steel bolts, 30mm in diameter, will immediately engage into the door frame, locking the door shut and prevent access by force. In addition, a unique combination of door curvature seals will also present a virtually airtight defence against penetration by heat, gases and the chemicals ever present in a fire.

Even greater strength and resistance can be obtained with an optional PAD 4, anchor system. This device permanently bolts the safe to any type of floor and prevents its physical removal from the premises. Use of this system not only deters attack, but also significantly increases the insurance rating of the safe.

### File Capacity Chart

Type of document file	Total number of files per unit	Configuration	Total number of files per unit	Configuration	Total number of files per unit	Configuration
<b>Series: DS2500</b>	<b>Model: DS2501</b>		<b>Model: DS2502</b>		<b>Model: DS2503</b>	
A4 Lever Arch Folder (H320 x W75 x D290mm)	2	2 files on sides (not standing)	4	1 row of 4 files	7	1 row of 6 files 1 file on side on top shelf
Foolscap Lever Arch Folder (H350 x W80 x D285 mm)	2	2 files on sides (not standing)	4	1 row of 4 files	6	1 row of 5 files 1 file on side on top shelf
Foolscap Box File (H370 x W75 x D245mm)	2	2 files on sides (not standing)	4	1 row of 4 files	7	1 row of 6 files 1 file on side on top shelf



#### ● Dimensions stated as:

- A External height x width x depth
- B Internal height x width x depth
- C Door swing / Door Handle Depth
- D Weight
- E Capacity
- F Data box volume
- G Packaged Dimensions & Weight
- H Internal Key Hooks

#### ● Data Combi DS2501K/E

- A 720mm x 500mm x 500mm
- B 510mm x 375mm x 330mm\*
- C 440mm/40mm
- D 97 kg
- E 63 litres
- F 7 litres
- G 745mm x 530mm x 560mm / 100kg
- H 4

#### ● Data Combi DS2502K/E

- A 905mm x 520mm x 520mm
- B 670mm x 380mm x 330mm\*
- C 460mm/40mm
- D 129 kg
- E 84 litres
- F 7 litres
- G 930mm x 550mm x 575mm / 132kg
- H 4

#### ● Data Combi DS2503K/E

- A 1145mm x 655mm x 560mm
- B 880mm x 475mm x 350mm\*
- C 570mm/40mm
- D 222 kg
- E 145 litres
- F 13 litres
- G 1160mm x 695mm x 630mm / 231kg
- H 5

\*The internal drawer and data box reduces internal height by 305mm on DS2501K/E, DS2502K/E and 380mm on DS2503K/E.

All weights and sizes are approximate.

All Phoenix Fire Safes come with a Free lifetime 'after the fire' replacement warranty and a full two year materials and labour warranty.

Phoenix policy is one of constant improvement. We therefore reserve the right to alter any part of the specification achieved in this publication without incurring any obligation.

**DEALER'S STAMP**



Certificate Number 1059  
ISO 9001

DS2500 / 05 14 GB